

25 NOVEMBER

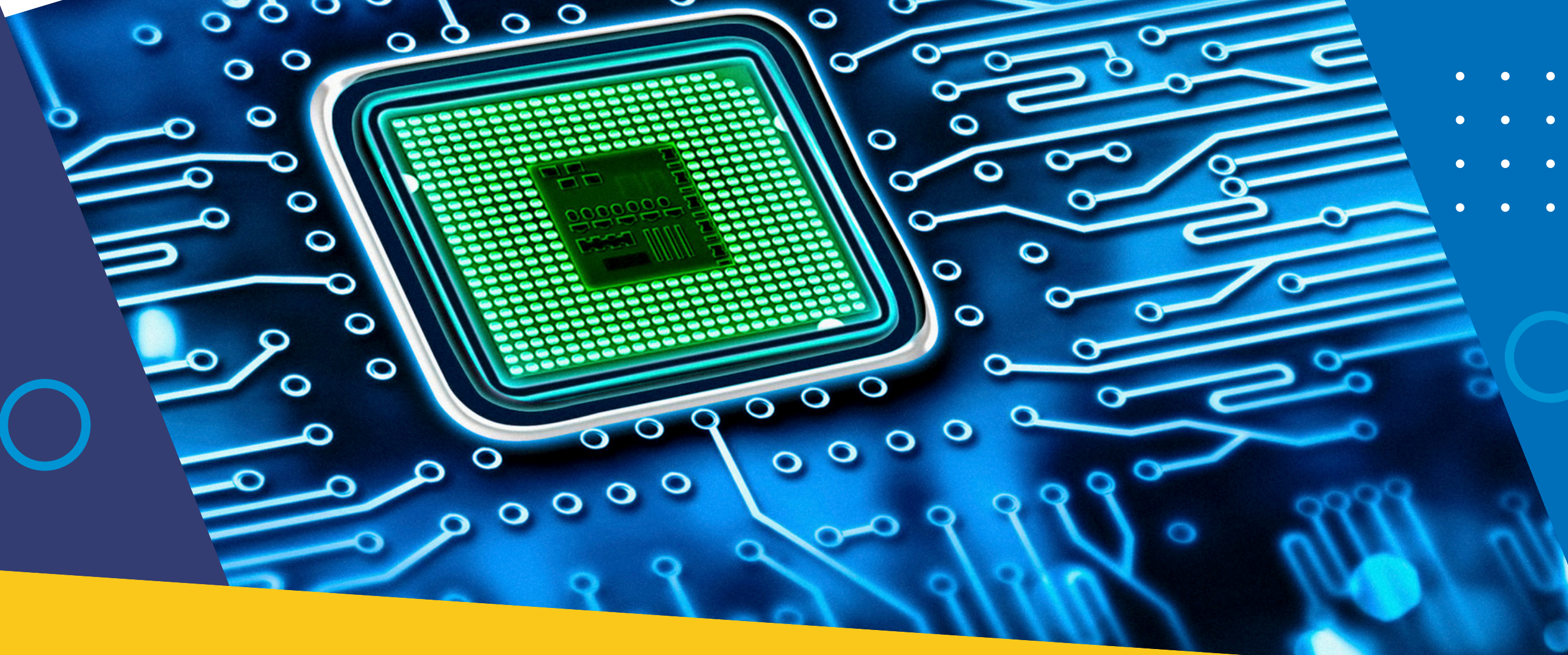
16:00

ROOM BT1.02

# EMBEDDED LINUX

## Workshop

8, George Baritiu Street  
BT Building  
Floor 1



Join us for a practical, hands-on workshop designed to introduce students to Embedded Linux. You'll learn the basics, set up a development environment, and gain experience in developing and deploying applications. Perfect for beginners and intermediate students looking to enhance their skills.

### WHAT YOU WILL LEARN

- Embedded Linux Basics and its applications.
- Learn about development environment for Embedded Linux projects.
- Hands-on experience on Embedded Linux platforms.

### TARGET AUDIENCE

Students passionate about Linux and Embedded systems

Prizes included!

### HOW TO REGISTER

Register below by **November 20th!**

