



**Emerson: A Global Automation Leader
with World-Class Software And Technology**

Emerson in History



1961
NASA Mercury
*the first US human
spaceflight*

1969
Emerson
instruments on
the Moon

Diogenes

1972
First Emerson
Control System



1981
Space Shuttle
Columbia
*the first Space Shuttle
orbiter to fly in space*



1986
HART - *the first global
open wireless
communication
protocol donated to
the industry*

DELTA V™

1996
First digital process
automation system

2009
CHARacterization Module
technology (CHARM)
*no marshalling cabinet or
cross-wiring*

2020
DeltaV Electronic Marshalling
with CHARMS technology
contributed to the fast
**development of Covid-19
vaccines**

2020



#Launch America
SpaceX mission
to ISS

2024

**“Industrial IoT
Company of the
Year”** for the 6th time



**ENERGY STAR® Partner of the
Year** for Energy Management
Leadership

**America’s Most Innovative
Companies** by Fortune Magazine
#33 of 300 companies.

EMERSON at-a-glance:

A GLOBAL LEADER IN AUTOMATION TECHNOLOGY AND SOFTWARE

At Emerson, our people are at the center of everything we do. Together, we are building a global community of smart, dedicated people who thrive when everyone feels welcomed, trusted, celebrated, and empowered to solve the world's most complex problems.

Let's go, together.

LIVING OUR PURPOSE

We drive innovation that makes the world healthier, safer, smarter and more sustainable.

GLOBAL PRESENCE, GLOBAL OPPORTUNITIES

NYSE: **EMR**

130

manufacturing locations

74,000

employees

\$17 B

Global sales

2023 SALES BY BUSINESS GROUP

Software and Control

\$5.4B

Intelligent Devices

\$11.7B

MAKING A BETTER WORLD POSSIBLE



~70%

of Emerson sales are tied to sustainability-enabling technologies



65%

of 2022 electric vehicles produced using Emerson solutions



20%

global power generation automated using Emerson control systems and software



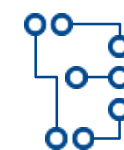
17,000

Employee-owned patents



25 of Top 25

life sciences companies use Emerson technology



9 of Top 10

semiconductor manufacturers use Emerson technology



Critical Infrastructure Automation



OVATION™



ASCO™



Everyday Automation

AVENTICS™



BRANSON™



Testing Automation



At Emerson, we drive innovation that makes the world healthier, safer, smarter and more sustainable

Extreme Condition Automation



TESCOM™



DELTA V™



ROSEMOUNT™

Process Automation



**FISHER™
TARTARINI™**



Software-Defined Automation Platform

EMERSON™

EMERSON CLUJ

At a Glance

18
Years in Cluj-Napoca

3500+
Employees

6
Multilingual Shared Services

6
Manufacturing Units



FINANCIAL RESULTS FY24

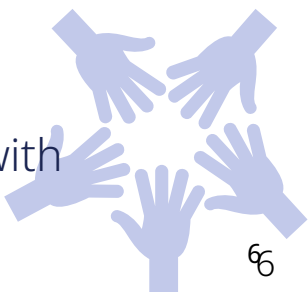
- **330M USD** in orders
- **490M USD** in sales
- **5.9M USD** investments:
 - Building refurbishments, machinery, sustainability
 - **180+M USD Investments since 2006**

7 Volunteering-led
Employee Resource
Groups

12 Universities & student
organizations
we partner with

4 Programs
designed for students
Engineering, Business,
Finance, Mentoring

27 NGOs
we collaborate with



Solutions, Services & Expertise for Essential Industries

DISTRIBUTED CONTROL SYSTEMS

Plant Operations Performance

DELTA V™ OVATION™



DeltaV™ S-series Electronic Marshalling with CHARMs

DeltaV™ Safety Instrumented



Ovation™ Machinery Health™ Monitor



Ovation™ Controller

Ovation™ Safety Instrumented Systems



Field Communicator
CSI Technologies



AMS Suite



MEASUREMENT SOLUTIONS

Measurement

Pressure



DP Level



Wireless



Temperature



DP Flow



Flow Measurement

Coriolis & Density



Mag & Vortex



Multiphase



Ultrasonic



Robotic Welding

Machining & Painting

Manufacturing & Assembly

Customer Inspection

APPLETON

Lighting Solutions for Hazardous Areas



Life Sciences

Automotive

Chemical & Water

Power & Industrial

PRESSURE MANAGEMENT

CROSBY™



ANDERSON GREENWOOD™



TARTARINI™

- NEW -



FISHER™



Pressure Relief

Natural Gas

Industrial

Diversity, Equity and Inclusion

We cultivate an environment based on trust and support

35

Average Age

70%

University Graduates

60%

Millennials

~ 2300 people



56%

16%

Gen Z

600+ people



44%



#2 in Cluj Engineering



+1300

Employees
> 5 years in Emerson



25 nationalities

Algerian, Belgian, British, Bulgarian, Cameroonian, Canadian, Dutch, Filipino, French, German, Guinean, Indian, Israeli, Moldovan, Moroccan, Peruvian, Polish, Romanian, Russian, Salvadoran, Spanish, Syrian, Tunisian, Turkish, Ukrainian

+400

Employees
> 10 years in Emerson

14 Languages spoken in business

Romanian, Hungarian, English, German, French, Italian, Spanish, Swedish, Dutch, Polish, Czech, Slovak, Turkish, Portuguese

Paving the Way for the Young Generations of Innovators



A strong partnership



UNIVERSITATEA BABEȘ-BOLYAI
BABEȘ-BOLYAI TUDOMÁNYEGYETEM
BABEȘ-BOLYAI UNIVERSITÄT
TRADITIO ET EXCELLENTIA



**UNIVERSITATEA
TEHNICĂ**
DIN CLUJ-NAPOCA

Programs for Students



- ✓ **Partnership with 8 student organizations**
- ✓ **3 Bootcamp Programs:** Engineering, Finance, Business Excellence
- ✓ **1 Mentoring program**
- ✓ **Various Internship opportunities**
- ✓ **Courses/ Seminars delivered by Emerson experts**
- ✓ **On-Site visits**



**Systems and Software
World Area Engineering Hub**

Emerson Engineering Bootcamp 2025

Jul 7th – Aug 14th

We have 8 engineering fields in SYSS that you can choose from:

- ✓ Electrical & Instrumentation,
- ✓ Manufacturing Execution Systems,
- ✓ Simulation,
- ✓ Power & Water Solutions,
- ✓ Process Automation Systems,
- ✓ Information Networks,
- ✓ Proposal Engineering
- ✓ AI & Data Operations

In this role, you will:

- ✓ turn theory into hands-on knowledge,
- ✓ see how everything you learn is transposed into real-life solutions &
- ✓ experience a professional and dynamic environment;
- ✓ get to learn from our cool trainers and experts and interact with fellow students from different technical fields;

Eligibility criteria: 3rd-year student at an Engineering Faculty or 2nd-year student at Non-engineering Technical Faculty;

Paid summer Bootcamp: 1300 RON for the entire program

6 weeks, 8h /day

This program is **equivalent to the University Summer Practice.**

Automation
&
Simulation

July 7 – August 14, 2025
Paid summer internship

Engineering Bootcamp

You want to see how everything you learn is transferred into real-life solutions?

Choose one of the **expertise area of Automation & Simulation Engineer.**

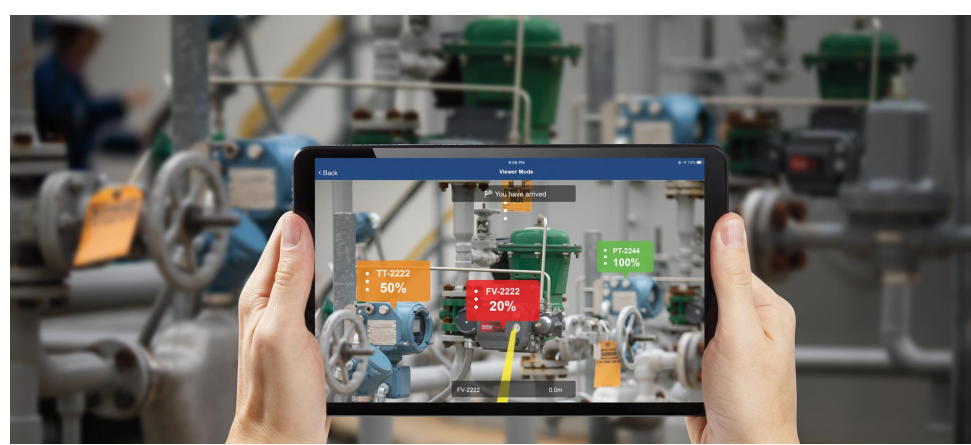
Apply here



Let's Go Let's Go Let's Go Let's Go Let's Go Let's Go Let's Go Let's Go
Let's Go Let's Go Let's Go Let's Go Let's Go Let's Go Let's Go Let's Go

8 Engineering Specializations

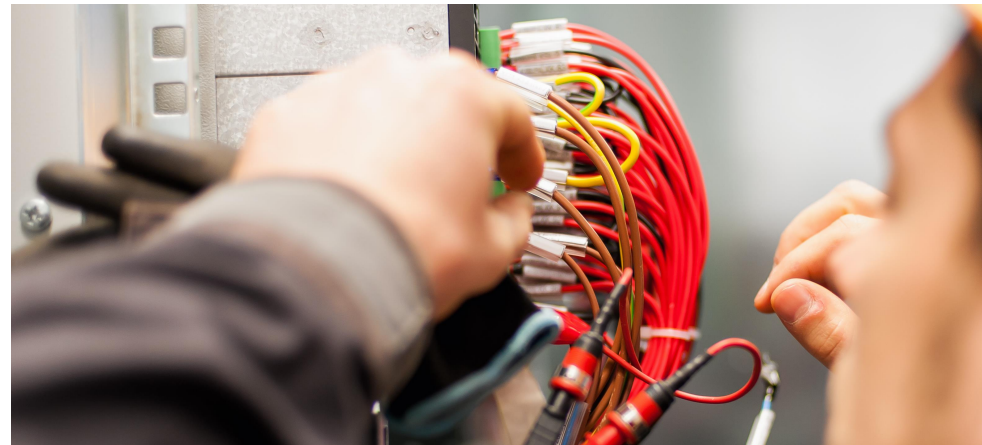
LEARNING WITHOUT LIMITS



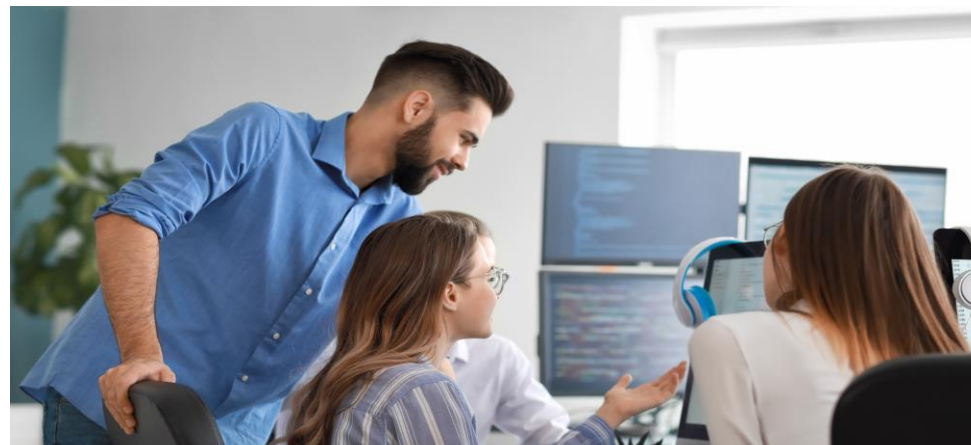
Process Automation Systems



Inside Sales Engineering



Electrical & Instrumentation



Simulation



iStaging – Computer & Network Infrastructure



Power & Renewables Solutions



Manufacturing Execution Systems



AI & Data Operations

Engineering Bootcamp 2025: What's Next?



AWARENESS



**TECHNICAL
ASSESSMENT**



INTERVIEWS



ENROLLMENT



ENGAGE



www.emerson.com/careers



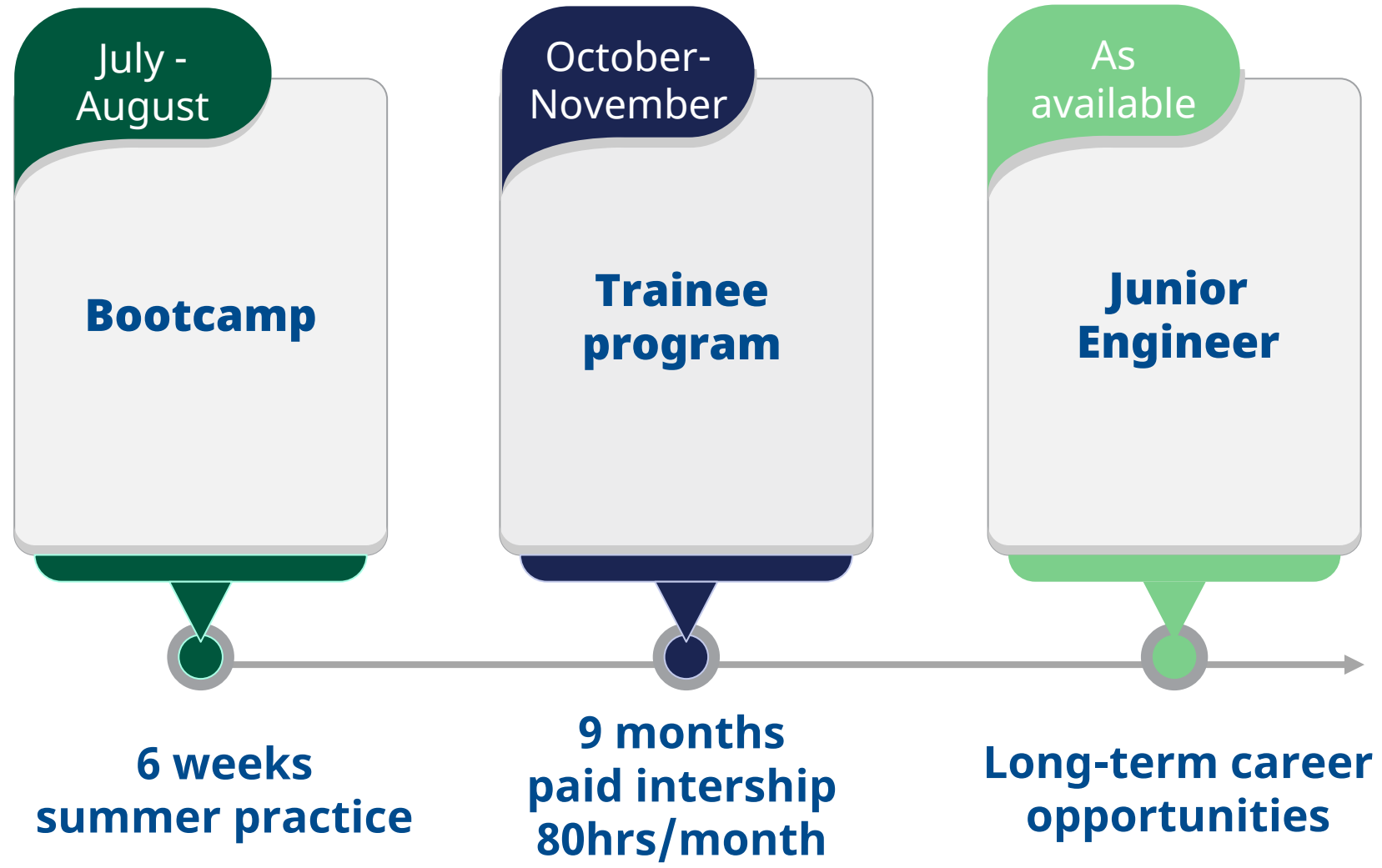
What to expect from this program?

- ✓ Improve your academic foundations
- ✓ See how everything you learn is transposed into real-life solutions
- ✓ Explore different engineering fields
- ✓ Experience the real industrial environment

**Learn
and
Have fun**

- ✓ Develop new skills for the future
- ✓ Participate in technical & soft skills workshops
- ✓ Speedup your career
- ✓ Get the chance to meet your future colleagues

Further Career Opportunities



www.emerson.com/careers



iStaging – Computer & Network Infrastructure



iStaging – Computer & Network Infrastructure

- Computer and network infrastructure
- DeltaV™, AMS Suite, Plantweb™



Main technologies:

- Dell servers/PCs
- Firewalls (Fortigate, DeltaV, Palo Alto)
- Switches (DeltaV, Cisco, Hirschman), KVM switches/extenders (Adder, Avocent)
- Time servers (Microsemi)
- McAfee solutions
- Plantweb™ Optics Datalake, Plantweb™ Optics Analytics, Plantweb™ Optics Templates
- AMS6500, AMS Device Manager

DeltaV™ installations

Cybersecurity

Virtualization

Networking

Wireless applications

Machine Health Monitoring

Plantweb™ solutions

iStaging – Computer & Network Infrastructure

- 2-weeks CNI training
- Buddies from the group
- Team integration
- Tools training
- Demo Project Coached activities

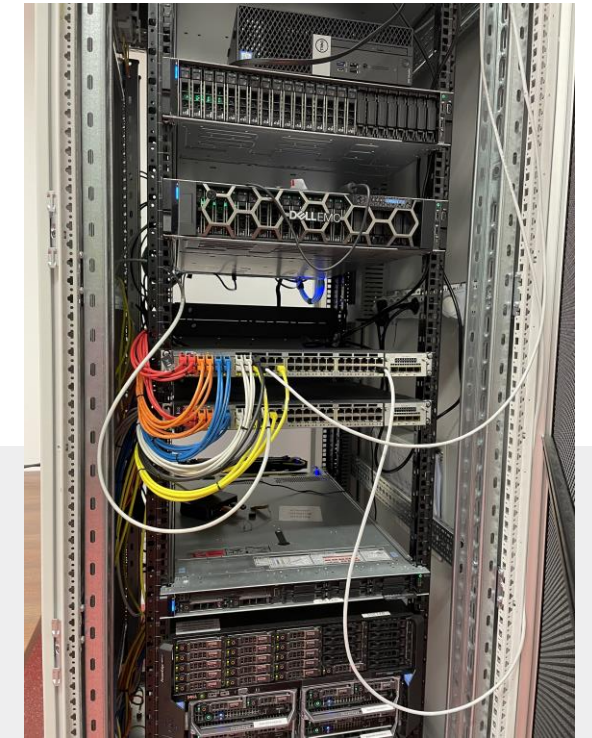


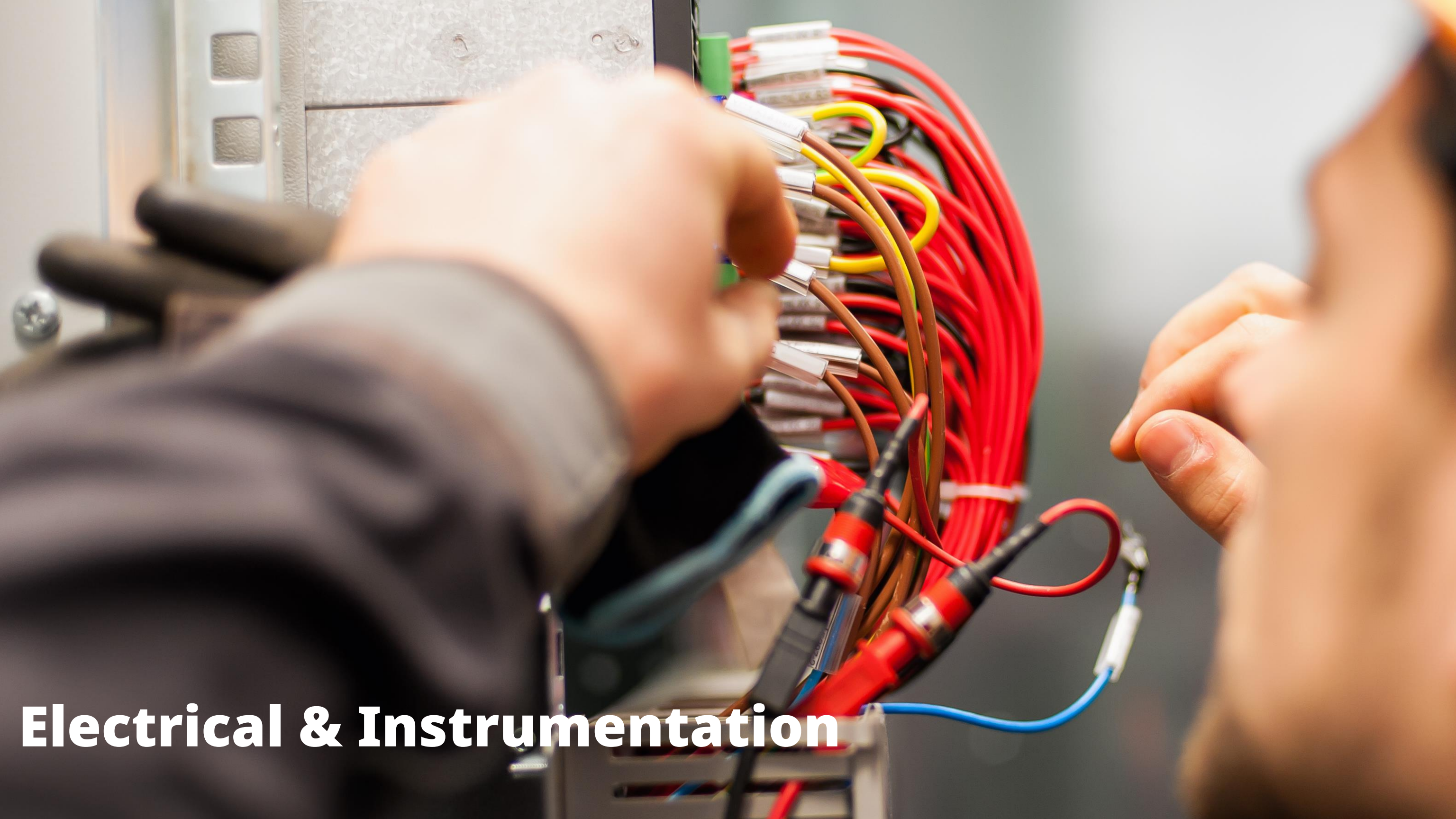
You will learn:

- Virtualization
- Networking
- Scripting
- Cybersecurity
- Wireless networks
- Reliability solutions
- Data analytics & Big Data Visualization (Power BI)



- General knowledge of networks, IP addressing, Operating systems installation
- Good knowledge of MSOffice





Electrical & Instrumentation

Electrical and Instrumentation

- Hardware engineering
- DeltaV™
- Ovation™
- Machinery Health™ Monitor



Cabinet design

Project architecture

Loop and field diagram drawings

Standard cabinets portfolio

Hazardous areas solutions

Materials requirement

Assembly support

Factory Acceptance Test



Electrical and Instrumentation

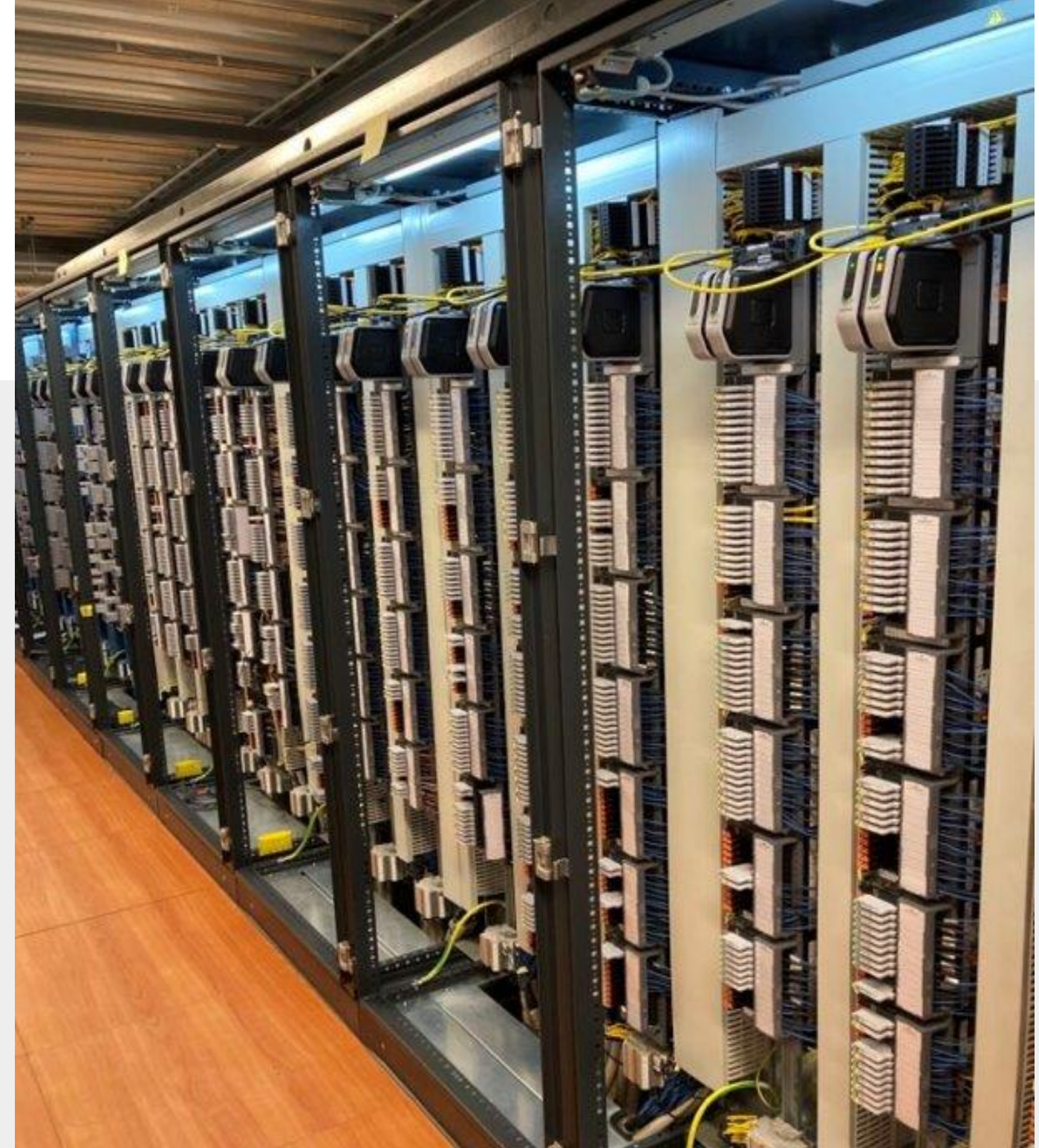
- 1-week DeltaV training
- 1-week E&I specific training
- Team integration
- Tools training
- Demo Project Coached activities with buddies from our Group

You will learn:

- Cabinet design with AutoCAD Electrical
- Various technical calculations using Excel and other software
- Visual inspection of built cabinets
- Physical testing of electrical equipment in cabinets



Basic knowledge of Electrical and Mechanical Design





Power & Renewables Solutions

Emerson Confidential

Power & Renewables Solutions

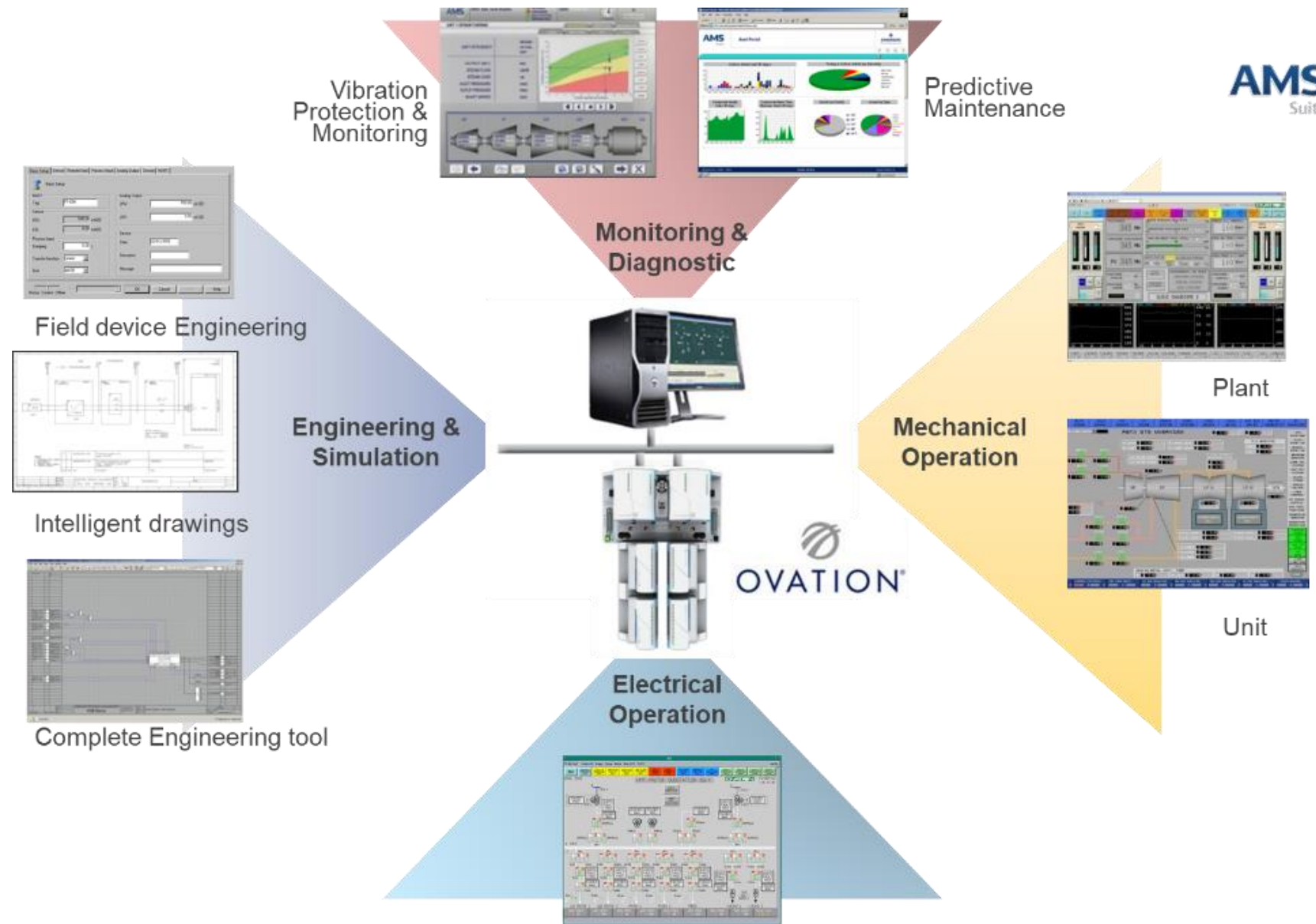
- Power systems engineering
- Distributed control system for large plants solar, coal, biomass and waste-to-energy

Application configuration

- Prepare all Graphical representations for the plant
- Design the customized algorithm for plant control
- Design the electrical drawings

Commissioning, Startup and Service

- Start and test all plant equipment and plant behavior
- Fine-tune the control system
- Maintenance



Power & Renewables Solutions

- Software engineering
- Ovation™
- 2-weeks Ovation™ training
- Team integration
- Tools training
- Demo Project Coached activities



You will learn:

Application configuration

- Prepare all Graphical representations for the plant
- Design the customized algorithm for plant control
- Design the electrical drawings



- Control engineering background
- Electrical Engineering



Process Automation System

Process Automation System

- Software engineering
- DeltaV™ DCS & DeltaV™ SIS



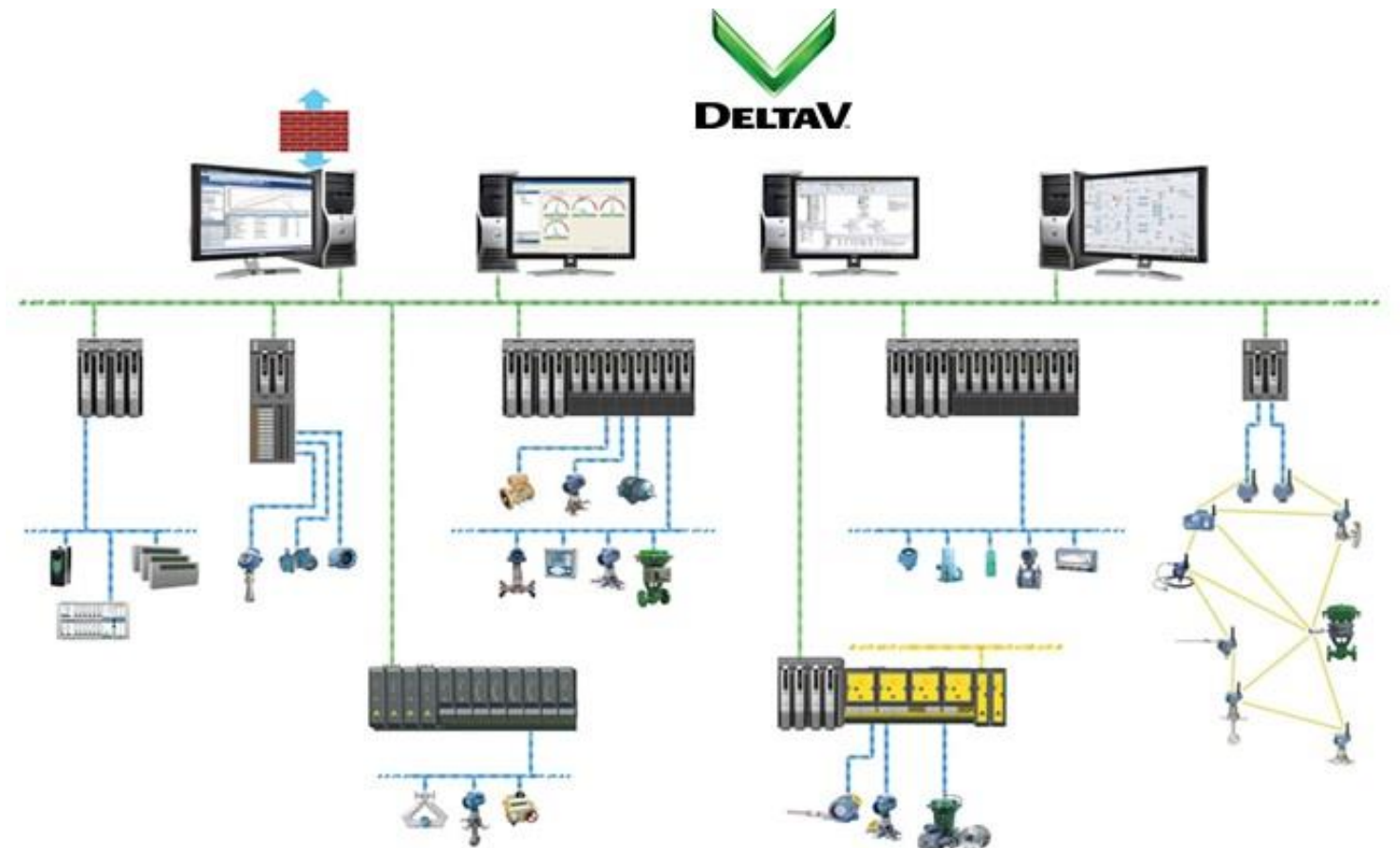
Design

Project Execution

Training Delivery

Testing / Qualification / Quality Control

Site Commissioning and Start-ups



Process Automation System

- 1-week DeltaV training + 3 workshops
- buddies from the Engineering Group
- Team integration
- Tools training
- Demo Project Coached activities



You will learn:

- Teamwork and collaboration;
- Basic and complex DeltaV configuration (HMI & Complex Logic);
- Design, build, and internally test DeltaV configuration and document your work accordingly;
- Soft skills development such as time management, communication, presentation, working in a cross-cultural environment;



- Control engineering background
- Electrical Engineering
- IT background



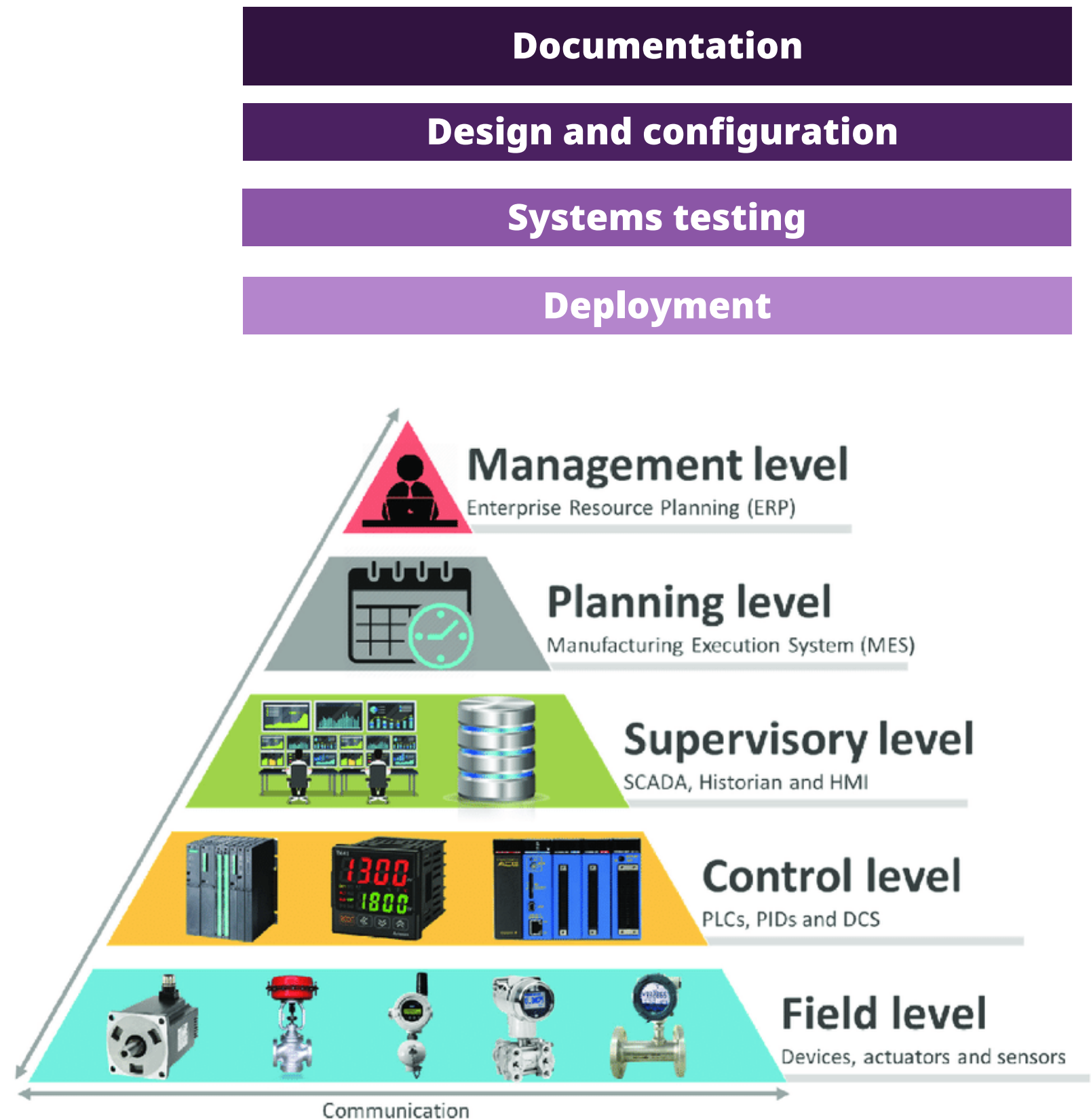
Manufacturing Execution System

Manufacturing Execution System

- Manufacturing execution system solutions
- Life Science industry project execution

Responsibilities

- Functional and Detailed Design
- Configuration
- Implementation
- Commissioning & On-Site Support
- System Installations and Hot Fixes
- System Migrations
- Sales Support, Demo, Prototype
- GSC Syncade Support
- Training
- Lead Engineering



Manufacturing Execution System

- 1-week DeltaV Syncade training
- Demo Project - Coached activities
- Test the solution
- Shadowing
- Tools training

You will learn:

- Where Syncade fits in a production environment
- Detailed understanding of the manufacturing business processes
- Software skills (XML, SQL, .Net, HTML, VB)
- Project execution and documentation practices in the Life Science industry
- Understanding of each level of the Automation Pyramid. Integration between Level 3 (MES) and Level 2 (DCS)



- Manufacturing execution system solutions
- Software programming skills
- Life Science industry project execution



Simulation

Simulation

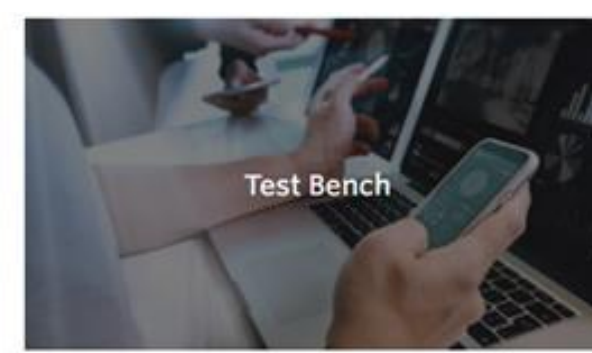
- Software engineering
- Mimic™ HYSYS Link, DeltaV™
- Low to High Fidelity Simulation, using Mimic, Hysys as simulators (DCS-DeltaV)
- Operator Training, Commissioning support
- Virtual & Augmented Reality projects



Process Simulation



Operator Training



Test Bench



Advanced Modeling

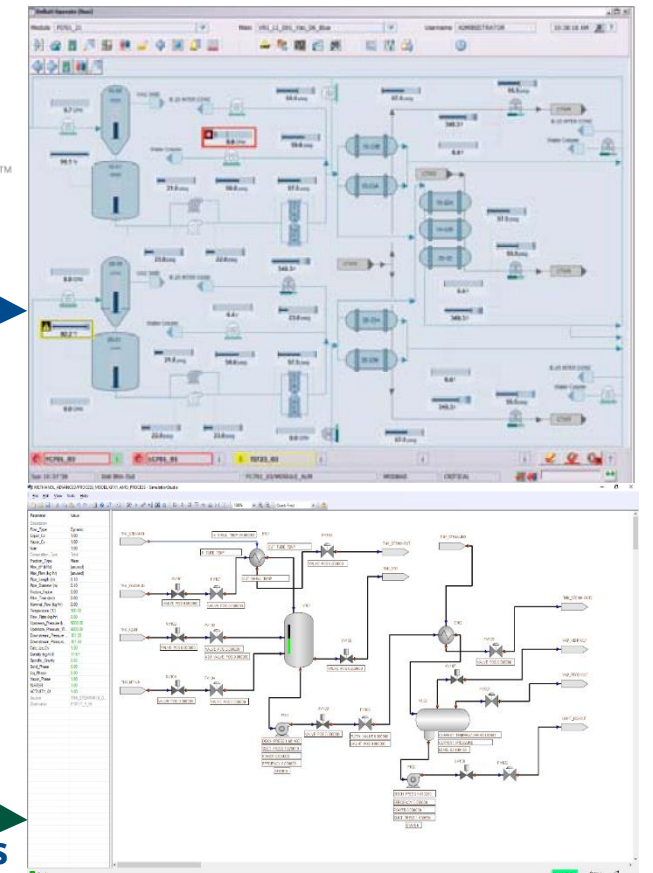
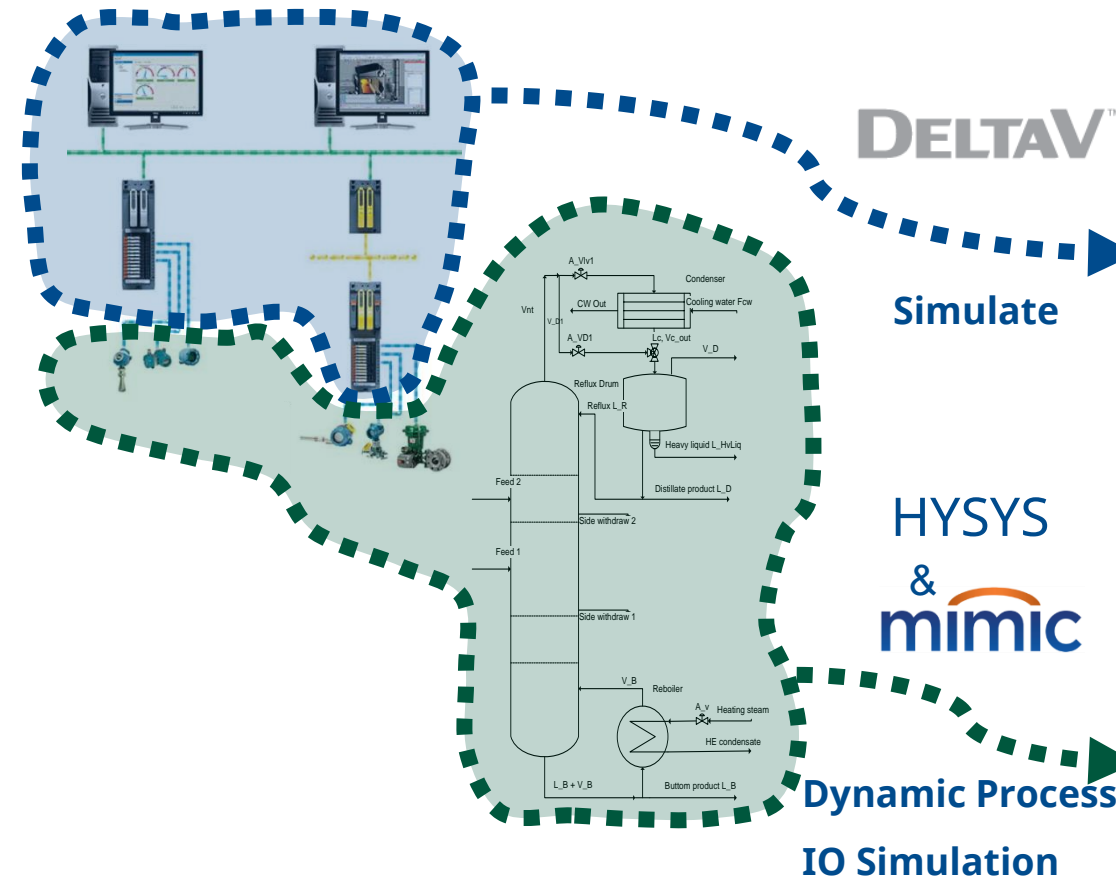


Simulated I/O Drivers



Immersive Simulation

- Multi-Purpose Dynamic Simulation
- Dynamic Simulation – OTS, Training & Commissioning Support
- Mimic™ Virtual Plant



Simulation

- 1-week DeltaV training + Simulation specific
- Buddies from the Simulation Group
- Team integration
- Tools training
- Demo Project Coached activities



Operator Training

Model Build

Integration

Start-up & Shut down Procedures

You will learn:

- DeltaV™ & Mimic Training
- Work on a Simulated Project Involvement in a real project
- Simulated Project Presentation



- Chemical Engineering or Automation Background
- Process engineering knowledge: Chemical & Petrochemical, Hydrocarbons, Life Science, Oil&Gas, Refinery
- Software skills – Simulation Software



Inside Sales Engineering

Inside Sales Engineering

- 1-week DeltaV training
- Onboarding specific proposals tools
- Team collaboration
- Coach-Buddy assignment



What do we do in ISE?

- **Detective work:** find the solution!
- Prepare technical and commercial offer
- Creation of new projects, extending site scope and upgrading existing systems
- Best place to find out what is new and what de **industry trends** are.
(Cybersecurity, new customer projects)



We speak multiple languages:



English, German, French, Spanish, Italian, Hungarian, Russian

DeltaV™ and Ovation™ Project Proposals

DeltaV™ & Ovation™ Lifecycle Services Proposals

Reliability Solutions Proposals

Data Analytics (PowerBI / Power Automate)

Inside Sales Engineering

- Initial training & dedicated mentorship
- Global view of all processes, from Customer need to installation
- Collaborate with other departments



Some companies we worked with lately:



What is in it for you?

- Understand sales strategies and how a sales organizations works
- Understand how companies make money
- Learn about Emerson’s technology
- Defining competitive and cost-effective technical solutions
- Learn how to communicate in a large company / matrix organization



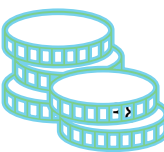
- ❑ Control & supervision systems
- ❑ General knowledge of actuators & sensors
- ❑ Good knowledge of Microsoft Office
- ❑ How to handle an 8 hour a day job



WE BRING TECHNOLOGY



AND MONEY TOGETHER!





AI & Data Operations

Data Operations

- Drive system automation through AI
- UX/UI innovation
- Cloud-based solutions

Main activities for DOT:

- Transforming activities through digitization and automation, while enhancing user experiences
- Application development through both low-code and hard-code approaches
- Creating reports using cloud sources, including data lakes
- Automated workflows that minimize human involvement and optimize time efficiency

AI Powered

Application development

Database management and creation

Automated workflows

Decision-driving dashboards



Data Operations

- Microsoft Power Platform training
- Demo Project for frontend/backend
- Engaging with departments, clients, and team members
- Shadowing



You will learn:

- Utilizing AI to optimize tool performance and increase work speed
- To create customized applications with no-code/low-code solutions that deliver high impact
- Developing automation flows using various connectors from the Microsoft platform
- Using SQL for data creation and modeling
- Design ideas applicable to both reports and applications



- AI Optimization
- Custom Application
- Data Modeling
- Business Needs Analysis
- Team Collaboration

Let's Go Let's Go
Let's Go Let's Go
Let's Go Let's Go
Let's Go Let's Go
Let's Go Let's Go
Let's Go Let's Go
Let's Go Let's Go
Let's Go Let's Go
Let's Go Let's Go
Let's Go Let's Go

**Let's Grow,
Let's Share,
Let's Contribute**

- **Get in touch:**
- **Automation & Simulation Team - LCSEducation@emerson.com**

